



Welcome

Central Texas

Faith and Disability Network

Meet and Greet Luncheon

September 14, 2021

Who We Are

- New initiative
 - Focus: inclusion and belonging for individuals with disabilities (both children and adults) in our local faith *communities*
 - TAMU Center on Disability and Development (CDD) and regional faith *community* leaders, families, individuals with disabilities, and *community* agencies.
-

The Central Texas Faith and Disability Network

- Align with the vision of the **Texas Faith and Disability Network (TxFDN)**
 - **Multi-faith** statewide network with a mission to link congregations, organizations, and individuals interested in starting and/or strengthening the inclusion and contributions of people with disabilities and/or their families in the faith communities of their choice.
-

Focus

- ***Awareness/Education*** - supporting churches with tools developed, training, presentations, workshops, etc. focusing on starting and/or strengthening disability ministries.
 - ***Belonging/Inclusion*** - increasing *community* presence and growth potential for local churches.
 - ***Resources*** - providing tools for addressing disability concerns and issues within the church and *community*.
-



Introductions

Central Texas Faith and Disability Network Members



Accessibility Matters

Kristie Orr
Disability Resources

Meagan Orsag
Center for Disability and Development

What is a disability?

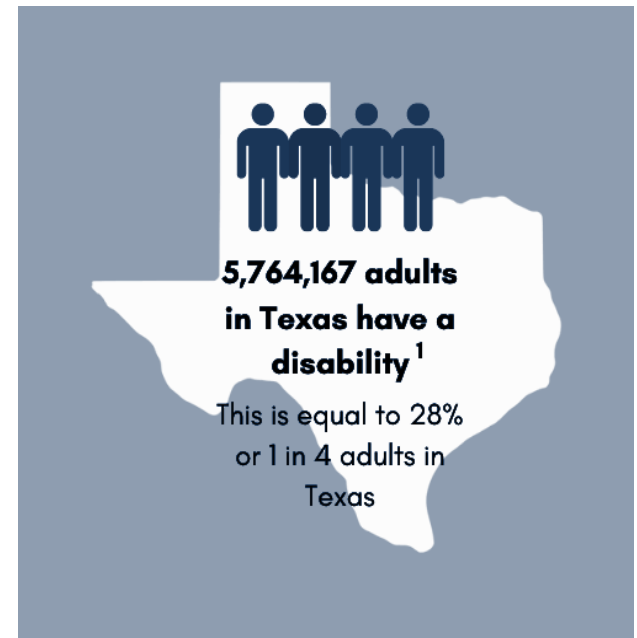
A disability is defined as a physical or mental impairment that substantially limits one or more major life activities. Major life activities include but are not limited to: caring for oneself, performing manual tasks, seeing, hearing, eating, sleeping, walking, standing, lifting, bending, speaking, breathing, learning, reading, concentrating, thinking, communicating, and working.

What kind of disabilities might be impacted in a church setting?

- Developmental Disabilities
 - Adults and children
 - Autism Spectrum Disorder
 - Deaf/Hearing Impairment
 - Blind/Visual Impairment
 - Mobility Impairment
 - Mental Health
 - Attention Deficit Hyperactivity Deficit
 - Health Conditions
-

Disability and Church Statistics

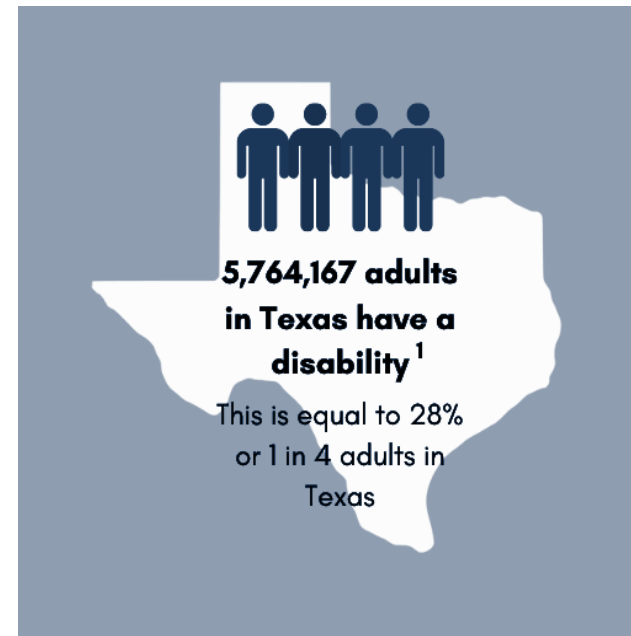
- 68% of children with Autism Spectrum Disorder and 74% of children with intellectual disability attend religious services at least annually (Whitehead, 2018 in Carter et al, 2021)
- Greater overall spirituality was independently associated with higher family quality of life (FQOL) ratings among parents of youth and young adults with IDD (Boehm et al., 2015)



CDC, 2021

Disability and Church Statistics

- There is a sizeable gap between desire for and provision of supports for disabled congregation members (Carter, Boehm, et al., 2016)



CDC, 2021

Promoting Accessibility through Universal Design

Universal Design is the design and composition of an environment so that it can be accessed, understood and used to the greatest extent possible by all people regardless of their age, size, ability or disability.

Examples: curb cuts, sliding doors and push buttons, ramps, etc.

Universal Design is bigger than physical access

- Video captions
 - Simple language
 - Image descriptions
 - Transportation
 - Mentorship
 - Accessible materials
-

Individualized, Intensive, and Intentional Supports (Carter, 2021)

- Person-centered
 - Revised regularly
 - Examples:
 - support groups for parents
 - disability awareness initiatives
 - resources for families
 - congregational advocates
 - spiritual counseling
 - respite care
 - spiritual/religious education plan with accommodations
 - additional supports during religious education/worship service
-



Faith Inclusive Checklist

Shelby Vaughn

Texas Council for Developmental Disabilities (TCDD)

Morgan Bradley

TCDD

Questions?
